

AONE

E-Call Function



ADAS
ONE

Brief Description

- AONE is a smartphone-based ADAS (Advanced Driver Assistance System) application used to monitor and warn drivers in case of road dangers or susceptible dangerous driving behavior.
- AONE application offers the following functions:



- E-Call (Emergency Call)



- FCWS (Front Collision Warning System)



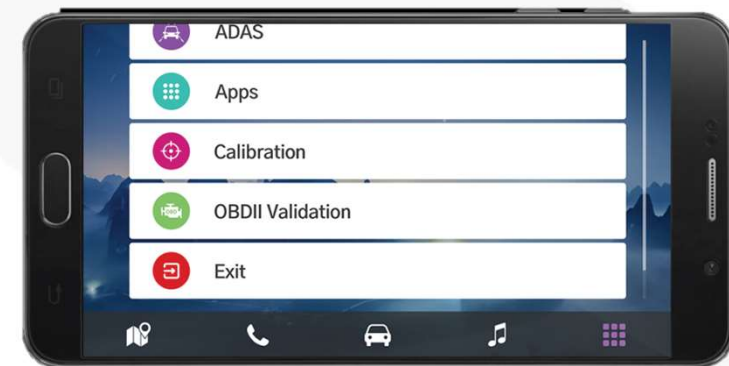
- LDWS (Lane Departure Warning System)



- FVSA (Front Vehicle Start Alert)

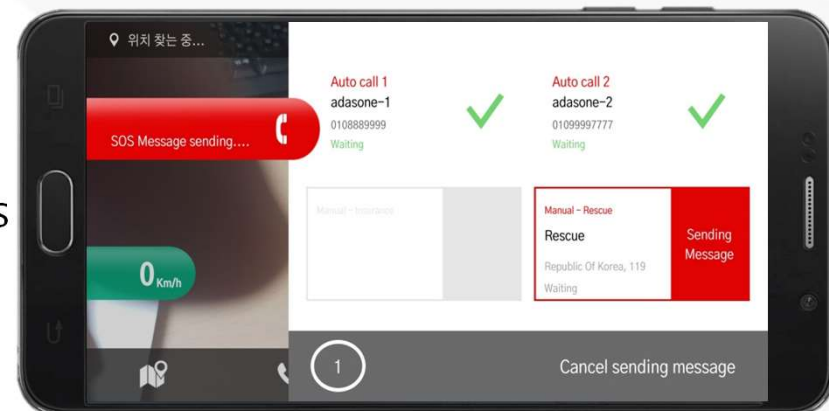
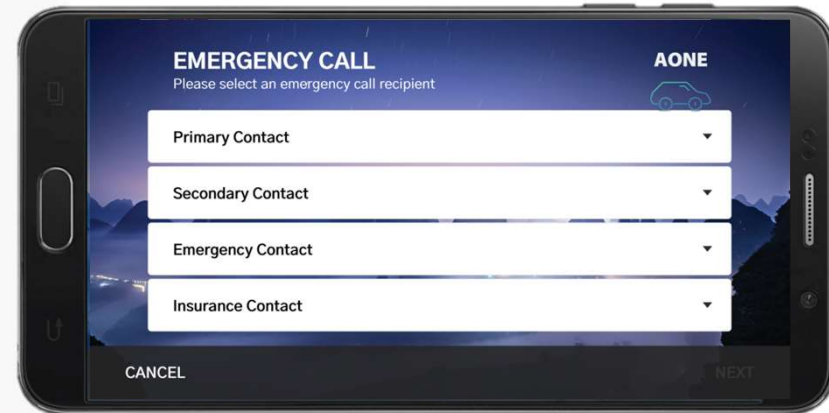


- OBD II (On-Board Diagnostics)

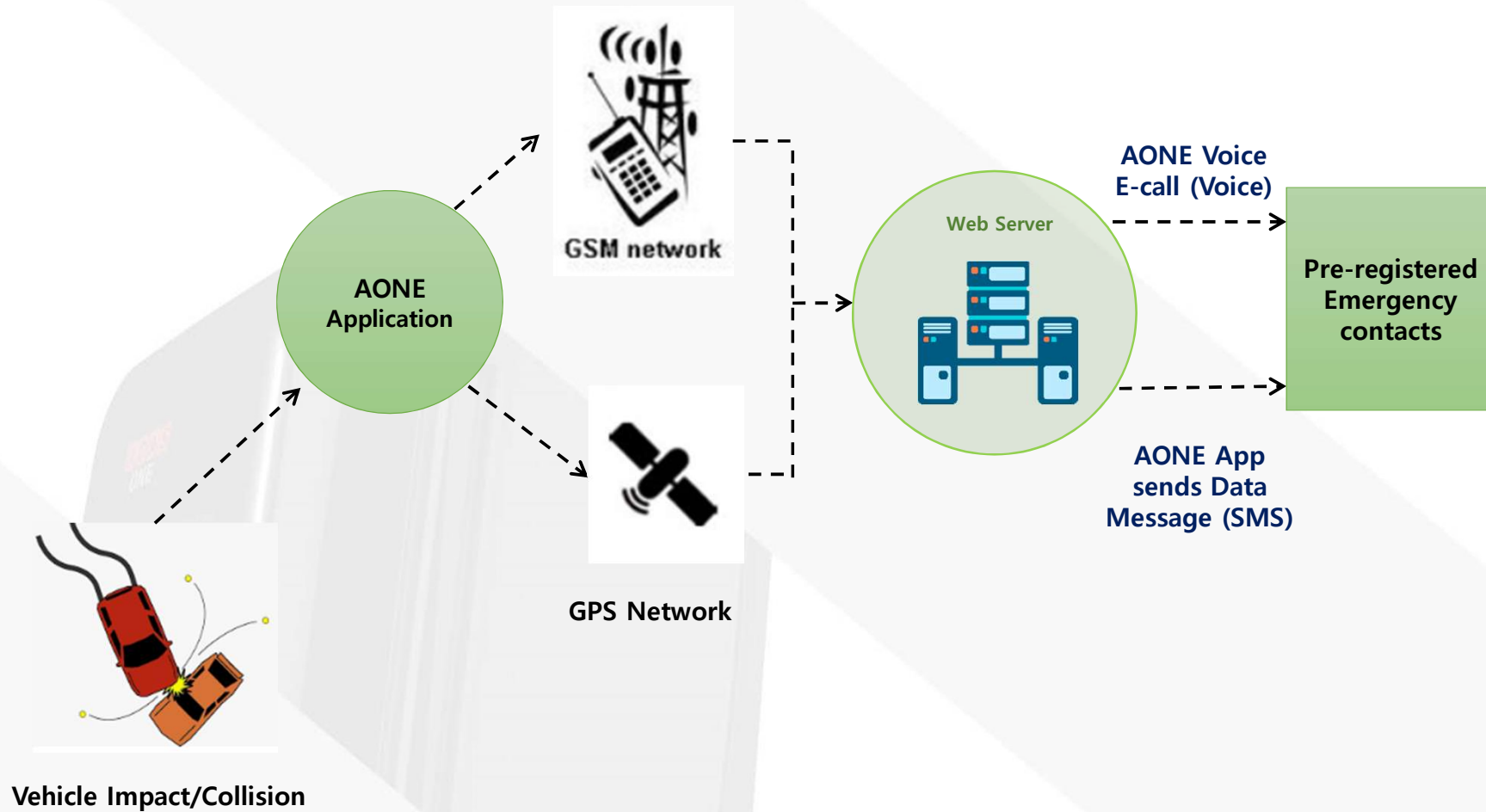


E-Call Function

- The E-Call (Emergency Call) function offers the user the possibility to automatically send emergency calls and SMS to certain contacts that we pre-registered by the user.
- The pre-registered contacts will receive the location and time of the driver in case this latter was involved in a car crash.
- The Application is able to detect vehicle crashes and send out data to the pre-registered contacts to react accordingly.
- Emergency facilities and family members can thanks to the E-Call save lives.



E-Call Architecture



***Access to SMS and call function is imperative for the functioning of the application**

Thank You

marketing@adasone.com

www.adasone.com

